

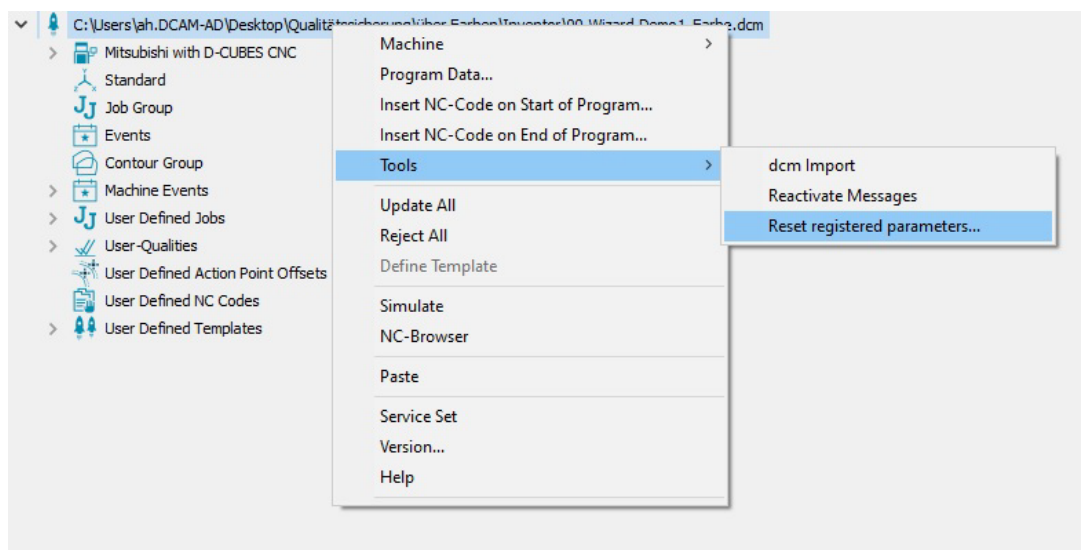
Assign contour properties without selecting contours

A new feature is that open and closed contours can be defined simultaneously via the 'Open contour' checkbox.

If the contour properties dialog is started via the toolbox, the contour selection is automatically pre-assigned depending on the context:

1. if a job is selected in the job browser, the contour selection consists of all contours of the job.
2. if the job group is selected in the job browser, the contour selection consists of all contours of all jobs.
3. in all other cases, the contour selection consists of all contours of the global contour group.

Reset registered parameters



Now it is possible to reset all registered values to their original or delivery status.

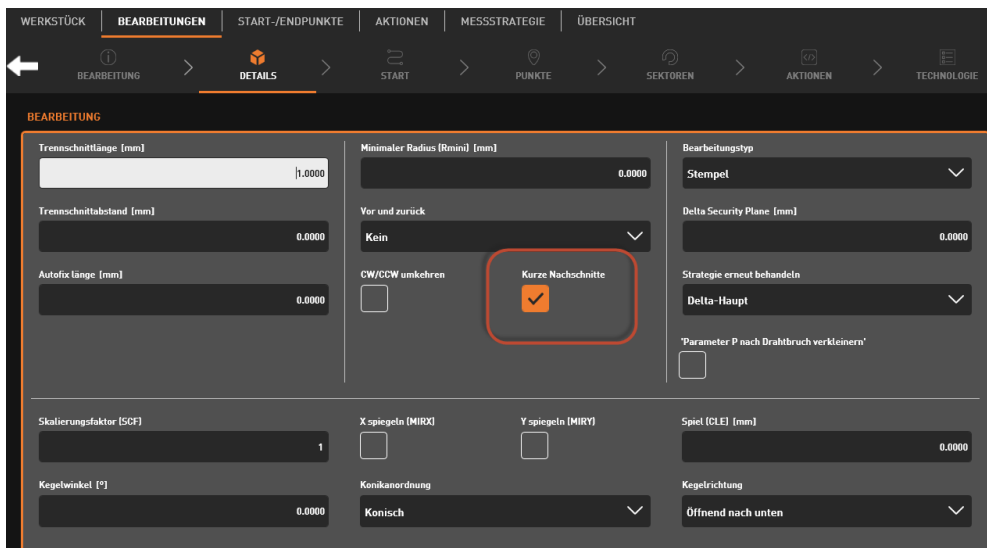
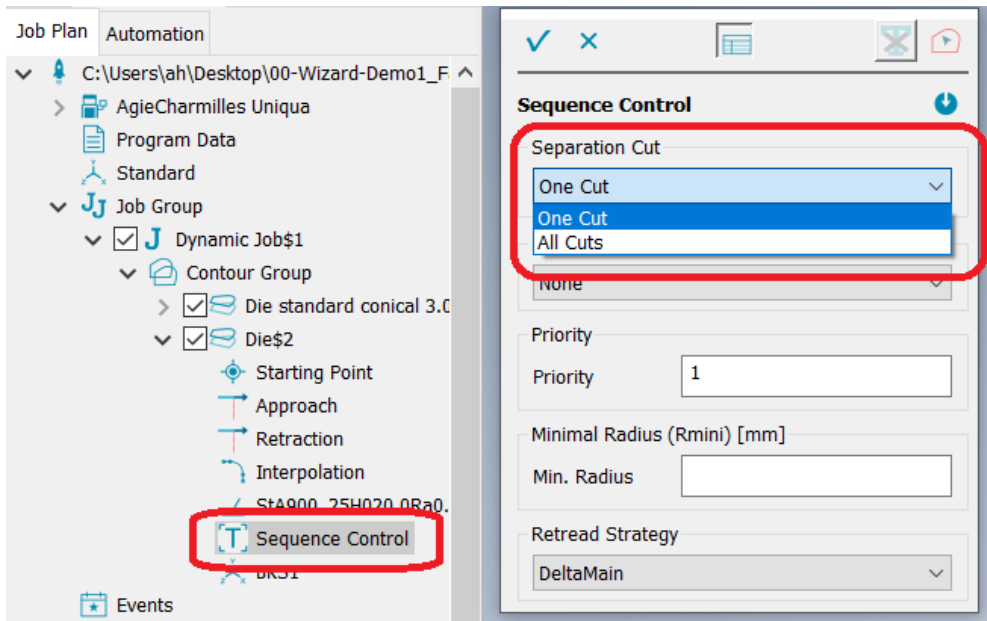
This means that the input values or designations that were stored in fields are completely deleted and the checkboxes and filters are checked again as in the initial installation.

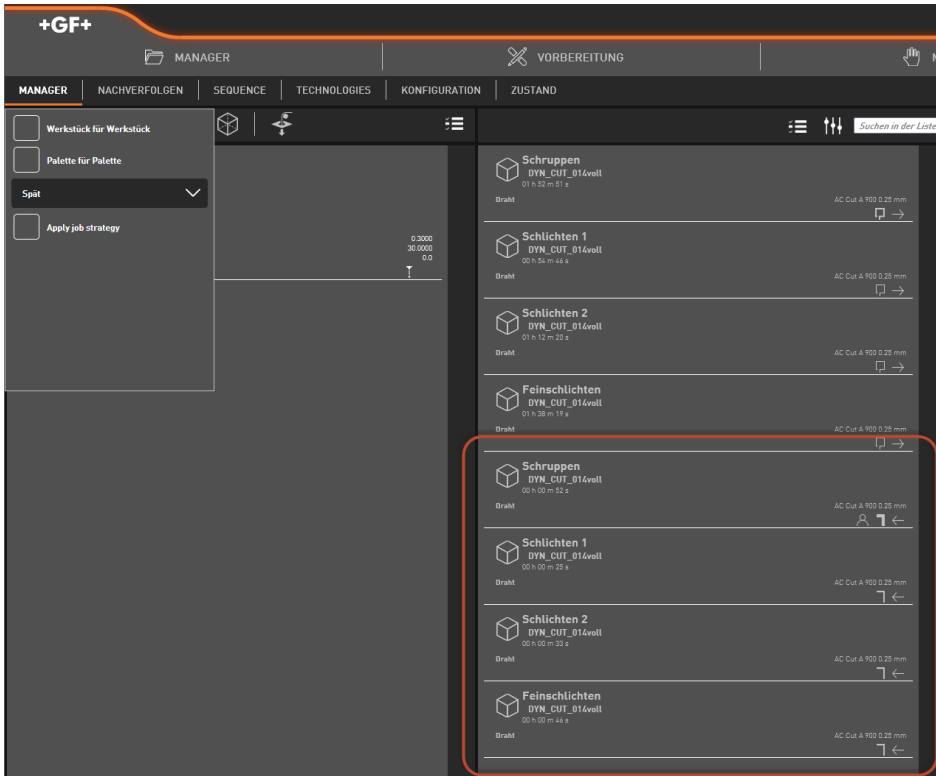
The only exception to this is the machine dialog.

Uniqua: Extension of the sequence control with regard to the separation of the drop-out parts

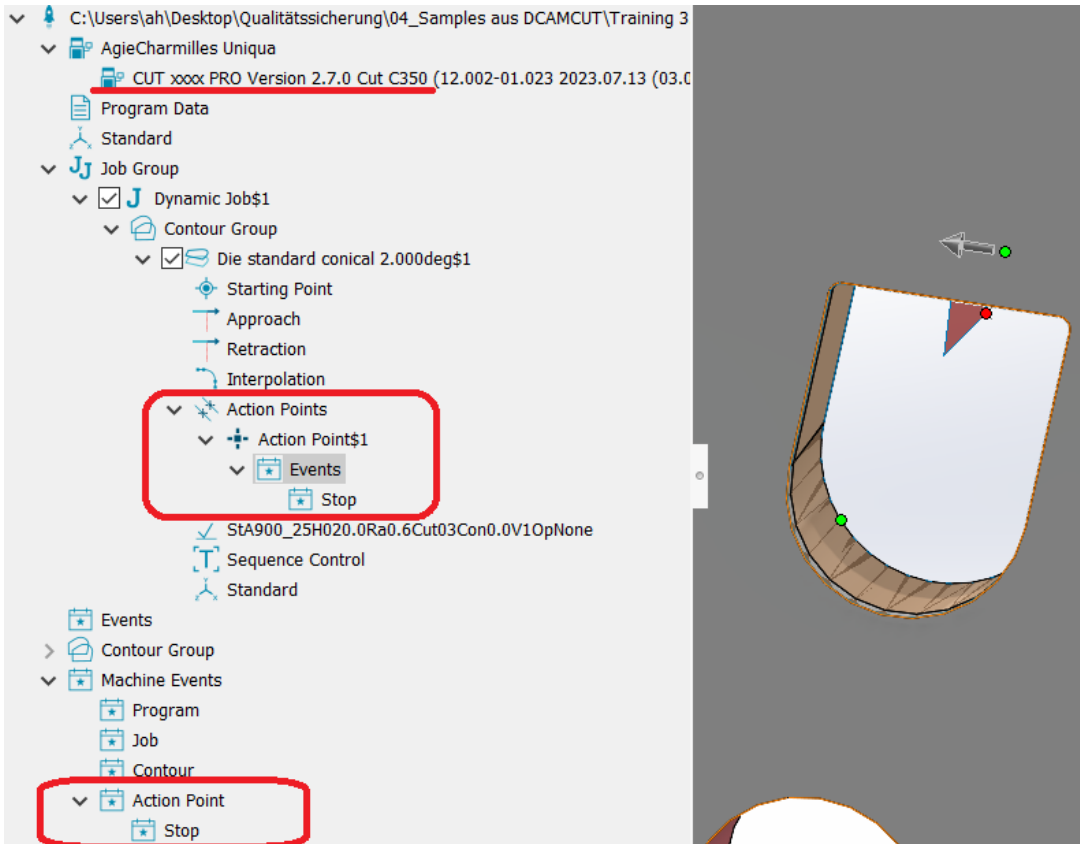
Uniqua: Extension of the procedure control for separating the drop-out parts

The dynamic jobs of the Uniqua are extended in the sequence control by the parameter "Separation of the drop-out part" (one cut, full technology).





Uniqua action point event "STOP" available from software version Uniqua 2.7.0

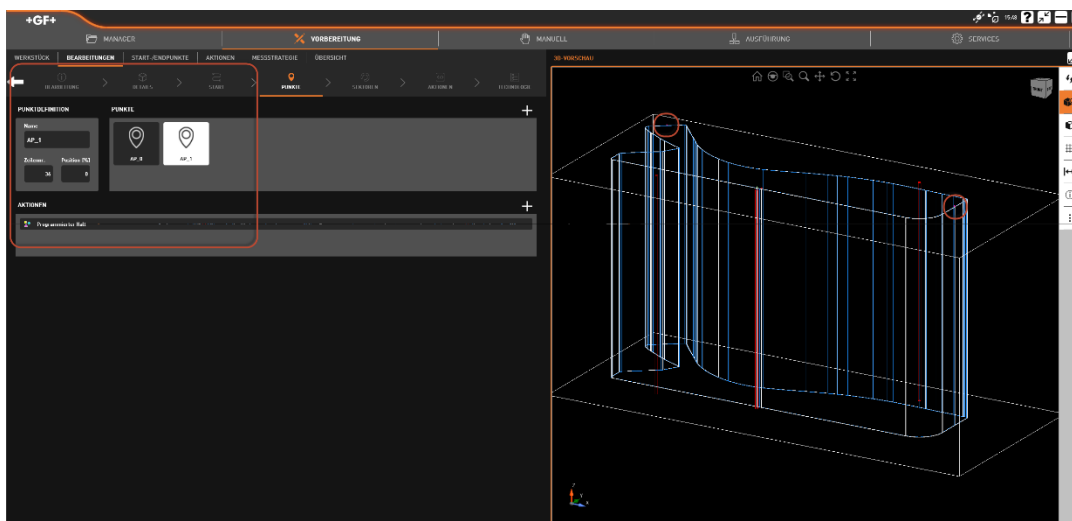


06/19/2024 Release Notes 9.0.22091

With software version Uniqua 2.7.0, the STOP events generated at an action point, both for the dynamic and the sequential variant, are also transferred correctly. The function is now supported in DCAMCUT.

```
Name
Geometry_0208

CODE
1 /// UNIQUA Structured ISO V1.0
2 G90
3 G92 X35.0 Y22.0 J0.0 I88.0
4 M60
5 G01 X35.0 Y28.762
6 G41
7 G01 X11.8947 Y28.762
8 G02 X10.8947 Y29.762 I0.0 J1.0
9 G01 X10.8947 Y35.7148
10 G02 X11.2927 Y36.5133 I1.0 J0.0
11 G01 X17.0636 Y40.8641
12 G01 X23.4232 Y45.4106
13 G03 X23.972 Y46.0037 I-1.1631 J1.627
14 G01 X27.4912 Y51.8308
15 G03 X27.2547 Y52.5512 I-0.428 J0.2585
16 G02 X18.6246 Y56.51149.0933 J118.4083
17 G02 X15.7465 Y58.123 I80.1927 J146.4667
18 G02 X10.8712 Y61.1043 I176.1894 J293.5943
19 G02 X10.1558 Y61.5352 I47.5265 J79.7669
20 G02 X9.288 Y62.1015 I12.753 J0.4332
21 G02 X7.0517 Y63.6207 I17.6856 J28.4381
22 G02 X5.3374 Y66.0592 I9.6445 J13.2345
23 G02 X5.494 Y67.343 I1.0455 J1.0756
24 G02 X10.712 Y71.3624 I4356.8196 J-5921.3464
25 M00
26 G02 X16.4397 Y75.3767 I4351.3514 J-5925.3657
27 G02 X17.1159 Y75.2905 I0.2956 J-0.4033
28 G03 X26.419 Y64.4607 I242.4495 J198.8405
29 G03 X28.764 Y61.7658 I400.6673 J346.2752
30 G01 X31.2099 Y68.9189
31 G03 X35.8885 Y64.916 I28.4983 J28.5733
32 G03 X46.0207 Y49.3688 I22.6598 J29.3623
33 G03 X51.578 Y47.6141 I13.2531 J32.2961
34 G03 X66.8233 Y47.5262 I7.8161 J33.4937
35 G03 X82.5419 Y52.2327 I-53.3893 J206.9075
36 G02 X90.8391 Y54.5614 I55.0264 J-180.1186
37 G02 X94.6015 Y55.4914 I21.8549 J-80.3364
38 G02 X98.561 Y56.3953 I19.297 J-75.4102
39 G02 X108.8155 Y57.9433 I26.8849 J-143.3543
40 G02 X114.8013 Y58.3867 I11.5055 J-114.6939
41 G02 X117.2754 Y58.5133 I6.8842 J-110.2541
42 G02 X121.917 Y58.5268 I3.3078 J-338.9641
43 I840
44 G01 X121.919 Y59.0268
45 M02
```



Fixed performance problems when navigating in the job browser or NC browser.